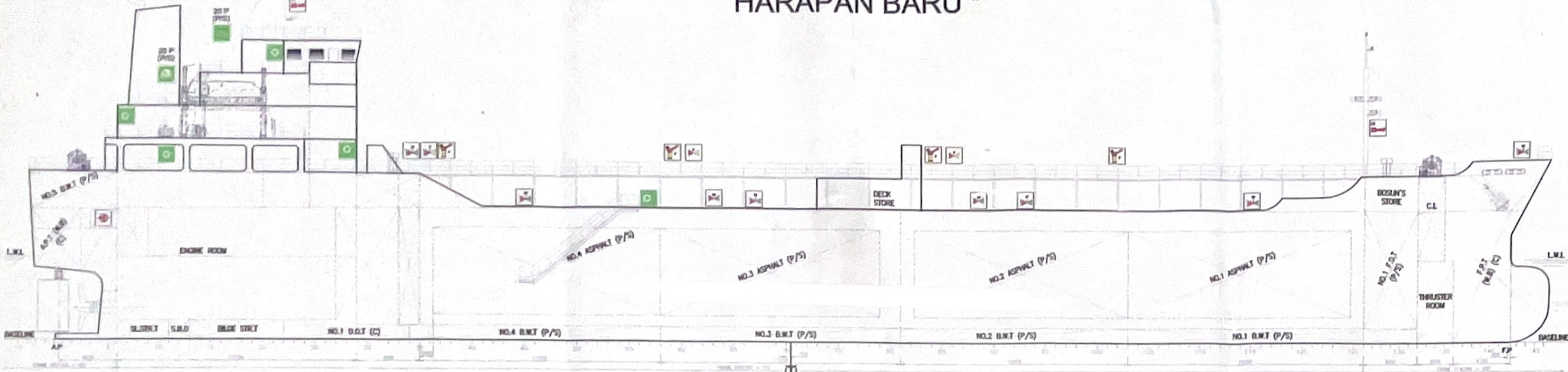
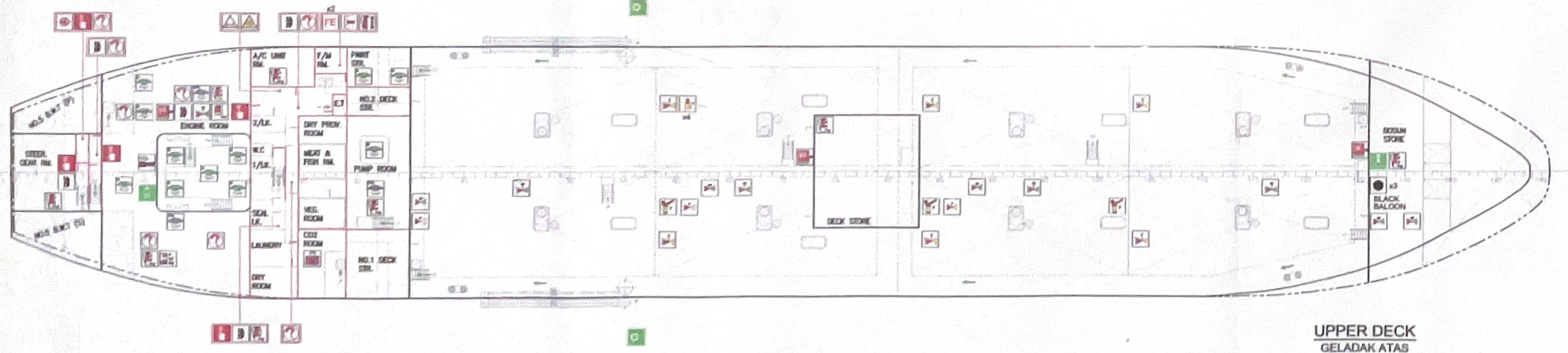
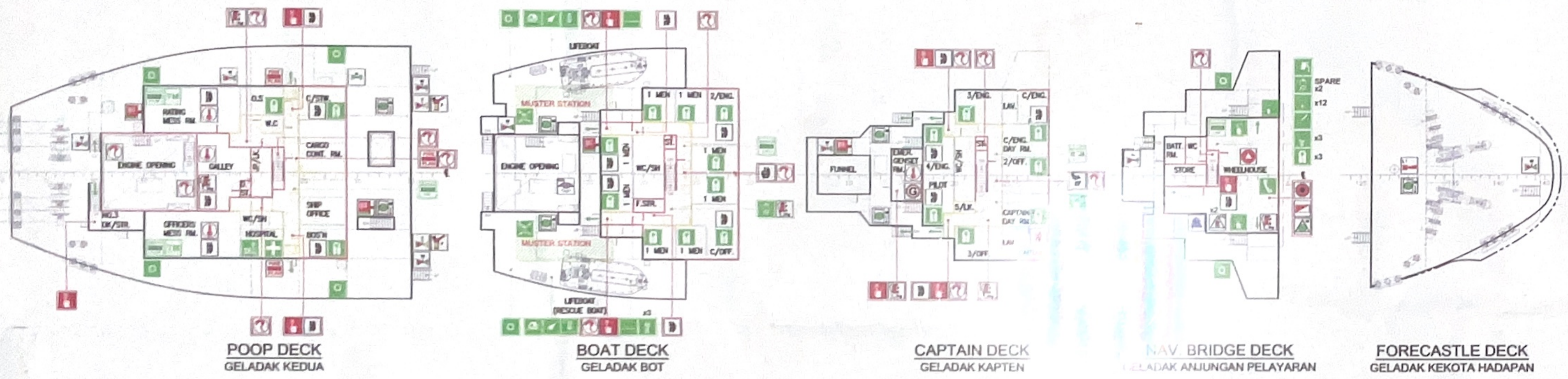


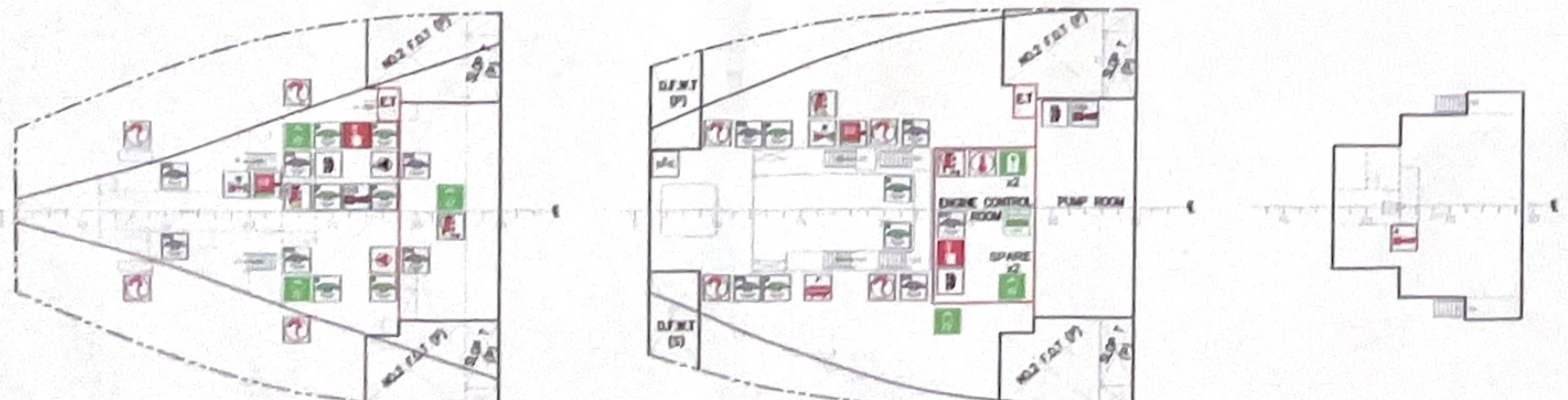
FIRE CONTROL & SAFETY PLAN PELAN KAWALAN KEBAKARAN & KESELAMATAN " HARAPAN BARU "



**OUTBOARD PROFILE
BAGHIAN LUAR KAPAL**



**UPPER DECK
GELADAK ATAS**



**BOTTOM DECK
GELADAK BAWAH**

**2ND DECK
GELADAK KEDUA**

**COMPASS DECK
GELADAK KOMPAS**

Verify as per approved drawings
(Signature)
6 Aug 2018

NAVARCH MARINE SERVICES
MARINE ARCHITECTURE AND CONSULTANTS
www.navarchmarine.com
Email: navarchmarine@gmail.com

TRANSLATION APPROVED
As authorized by
MARINE DEPARTMENT OF MALAYSIA
(30) IPL-693 JLD8

Date: 7 AUG 2018 Ref: 32618
Surveyor: *(Signature)*

LIFE SAVING APPLIANCES PERKAKAS MENYELAMAT NYAWA						FIRE FIGHTING EQUIPMENT PERALATAN MELAWAN KEBAKARAN					
SYMBOL	DESCRIPTION KETERANGAN	REMARKS CATATAN	LOCATION			SYMBOL	DESCRIPTION KETERANGAN	REMARKS CATATAN	LOCATION		
			NO.	DECK	ROOM				NO.	DECK	ROOM
	SAFETY PLAN PELAN KESELAMATAN		2	1	3		FIRE CONTROL PLAN PELAN KAWALAN KEBAKARAN		3	1	4
	MUSTER LIST SENARAI HIMPUNAN		1	1	5		GENERAL ALARM PUSH BUTTON BUKTIAN BAWAH UNTUK PENGALAMAN AM				1
	LIFEBOTE & RESCUE BOAT (20 PERSONS) BOAT PENYELAMAT & BOAT MENYELAMAT (20 ORANG)		2	2	2		CONTROL PANEL FOR FIRE & ALARM SYSTEM PANEL KAWALAN SISTEM KEBAKARAN & PENGALAMAN				1
	LIFEBOOT (20 PERSONS) BOAT KESELAMATAN (20 ORANG)		2	2	2		MANUALLY OPERATED CALL POINT POST PENYELAMAT KESELAMATAN MANUAL		1	5	3
	LIFEBOOT (20 PERSONS) BOAT KESELAMATAN (20 ORANG)		2	1	3		FIRE ALARM / BELL LOKASI / PENCIKIR KEBAKARAN		1	2	3
	LIFEBOOT WITH LINE BOAT KESELAMATAN DENGAN TALI		2	2	2		ANTI HEED ANTI HADIR				1
	LIFEBOOT WITH LINE BOAT KESELAMATAN DENGAN TALI		2	1	3		MOON HEED ANTI HADIR				1
	LIFEBOOT WITH LIGHT & SMOKE SIGNAL BOAT KESELAMATAN DENGAN LAMPU & ISMOKO ASAP		2	2	2		SMOKE DETECTOR PENCIKIR ASAP		4	4	3
	BOAT LIGHT LAMPU BOAT		2	2	2		HEAT DETECTOR PENCIKIR PANAS		1	3	5
	EXHAUSTION ROPE LADDER TANGGA TALI EMERGENCY		2	2	2		GAS DETECTOR (PORTABLE) PENCIKIR GAS (MUDAH ALIH)				1
	PILOT LADDER TANGGA PERSEKUTUAN		1	1	1		INTERNATIONAL SHORE CONNECTION PENYAMBUNGAN PERSEKUTUAN ANTARABANGSA				1
	LIFE JACKET JACKET KESELAMATAN		2	3	2		FIRE MAIN SECTIONS/ISOLATING VALVE BAMP PENGEKALAN/UTAMA KEBAKARAN		5		5
	EMERGENCY ESCAPE BREATHING DEVICE (EEDBD) ALAT PENYELAMATAN KESALAMATAN		3	3	1		FIRE MISTANT WATER BAMP DEMAM AIR		1	1	3
	TWO-WAY VHF RADIO TELEPHONE RADIO TELEFON VHF DUA ARAH		1	1	1		FIRE HOSE BOX WITH SPRAY/JET & NOZZLE LOKASI HOSE KEBAKARAN DENGAN MENCANGI SEKUTUAN		1	3	1
	EMERGENCY POSITION INDICATE RADIO BEACON RADIO SUKSES PENYAMPAK KESELAMATAN KESELAMATAN		1	1	1		FOAM SECTION VALVE BAMP PENGEKALAN BUSA		5		5
	ROCKET PARACHUTE FLARES ROKET PARACHUTE TERBUK		12	12	12		FOAM SECTION VALVE BAMP PENGEKALAN BUSA		5		5
	LINE THROWING APPARATUS ALAT PELAMBUNG TALI		1	1	1		SPACE PROTECTED BY DIRECTIONAL WATER RUANG DILINDUNGI OLEH AIR ARAH		8	4	3
	ALDS EXHAUST SIGNALING LAMP LAMPU SIKALASIS		1	1	1		DRAINAGE WATER SECTION VALVE BAMP PENGEKALAN SEMBUK AIR		1	1	1
	EMERGENCY TELEPHONE STATION STESION TELEFON KESELAMATAN		1	1	1		CO2 BOTTLE/BATTERY (33 NOS) BOTOL/BATERAI CO2		1	1	1
	TRAINING MANUAL PANDUAN LATIHAN		2	1	3		SPACE PROTECTED BY CO2 SYSTEM RUANG DILINDUNGI OLEH SISTEM CO2		8	5	3
	MUSTER STATION STESION BERHIMPUNAN		2	2	2		CO2 RELEASE STATION STESION PELEPASAN CO2		2	2	2
	BLACK BALCON BALCON HITAM		3	3	3		CO2 HOSE FIRE ALARM ALAT PENYAMPAK AIR MUDAH ALIH		1	1	1
	STRETCHER PESEKUTUAN		1	1	1		PORTABLE FOAM APPLICATOR (20L) APLIKASI BUSA MUDAH ALIH				1
	MEDICAL LOCKER ALAMAR PERSEKUTUAN		1	1	1		POWDER FIRE EXTINGUISHER INSTALLATION (RIMS) PENGEKALAN KEBAKARAN SEMBUK (RIMS)		1	1	1
	SHIP BELL LOKASI BELL		1	1	1		POWDER WHEEL FIRE EXTINGUISHER (2 NOS) PENGEKALAN AIR MUDAH ALIH DENGAN SEMBUK (2 NOS)		1	1	1
	PRIMARY MEANS OF ESCAPE ALAT LALUAN UTAMA KESELAMATAN						PORTABLE FOAM FIRE EXTINGUISHER (6L) ALAT PENYAMPAK AIR MUDAH ALIH		1	1	1
	SECONDARY MEANS OF ESCAPE ALAT LALUAN KEDUA KESELAMATAN						PORTABLE DRY POWDER FIRE EXTINGUISHER (6KG) ALAT PENYAMPAK AIR MUDAH ALIH		1	7	2
	A CLASS DIVISION DIVISION KATEGORI A						SPRINKLER CHARGES FOR FIRE EXTINGUISHER PENGEKALAN CANTON UNTUK PENYAMPAK AIR MUDAH ALIH		1		1
	B CLASS DIVISION DIVISION KATEGORI B						FIRE PUMP PAM KEBAKARAN		1		1
							FIRE PUMP PAM KEBAKARAN		1		1
							EMERGENCY FIRE PUMP PAM KEBAKARAN		1		1
							EMERGENCY GENERATOR PENYALUR KESELAMATAN		1		1
							LOCKER WITH FIREMAN'S OUTFIT ALAMAR DENGAN DALU ANU DOKAN		2		2
							REMOTE CONTROL FUEL OIL VALVES ALAT KAWALAN AIR MUDAH ALIH DENGAN JAUH		1		1
							REMOTE CONTROLLED SHUT-OFF SUAS PENUTUP PENGEKALAN		1		1
							REMOTE SHUT-OFF FUEL/OIL PUMP ALAT KAWALAN AIR MUDAH ALIH		1		1
							FIRE CHAMBER PENYAMPAK KEBAKARAN		1	2	2

- FIRE FIGHTING NOTE:**
- HOSE NOZZLES IN ENGINE ROOM ARE TO BE COMBINATION OF JET & SPRAY TYPE OTHER NOZZLES TO BE JET TYPE.
 - TWO (2) SETS OF FIREFIGHTER EQUIPMENT CONTAINING:
 - PROTECTIVE CLOTHING
 - BOOT AND GLOVE MADE OF RUBBER
 - HOSE HELMET
 - ELECTRIC SAFETY LAMP
 - FIRE AXE
 - FIREPROOF LIFELINE
 - ONE (1) SAFETY LAMP
 - ONE (1) BREATHING APPARATUS COMPLETE WITH TWO (2) BOTTLE SPARE
 - SPRINKLER CHARGE TO BE PROVIDED FOR EACH FIRE EXTINGUISHER.

- NOTA MELAWAN KEBAKARAN:**
- MENCERAI NYD DI DUAH BELAH DALU KAWALAN JENIS PENGEKALAN KEBAKARAN & PANCUTAN DALU DALU KAWALAN JENIS KEBAKARAN.
 - DUA (2) SET KESELAMATAN AIRI BOMBA MENGENA:
 - DAJU PERLINDUNGAN
 - KASUT DAN SARUNG TANGAN ISI PERUBUK DAN DOKAN
 - TOPI TANGAN LAKAS
 - LAMPU KESELAMATAN ELEKTRIK
 - KAWALAN
 - TALI KAWALAN AIRI
 - SELAMATAN
 - SATI (1) ALAT DAWATUN PENYAMPAK LENDAP DENGAN DUA (2) TANGI CANTON
 - PENGEKALAN PERLU DISEDIAKAN UNTUK SETIAP ALAT PENYAMPAK KEBAKARAN.

PORT REGISTRY PERLABUHAN PENDAFTARAN	PORT KELANG
GROSS TONNAGE TANAN KASAR	5072
CALL SIGN ISYARAT PANGGILAN ANTARABANGSA	9MYQ7
OFFICIAL NUMBER NOMBOR RASMI	336854
IMO NUMBER NOMBOR IMO	9291171
COMPLEMENT JUMLAH PENGINAPAN	20 PERSONS
PRINCIPAL PARTICULARS	
LENGTH O.A. PANJANG KESELURUHAN	109.50 M
LENGTH B.P. PANJANG GARIS PERENTAS	104.50 M
BREADTH MLD LEBAR LUARAN	18.20 M
DEPTH MLD DALAM LUARAN	09.60 M
DESIGN DRAFT MLD DRAF REKAAN LUARAN	06.00 M

**HARAPAN BARU
110M ASPHALT CARRIER**

FIRE CONTROL & SAFETY PLAN

OWNER: MPT TAMBUNG SEM BRD
DRAWN: KUBANGKUBA DOCKYARD CO. LTD. JAPAN
CHECKED: ATA
APPROVED: -
DATE: -

CLASS: -
HULL NO: -
SCALE: NTS
DRAWING CODE: A1
REVISION: 0

DRAWING NO: RF_170R_LSA_001